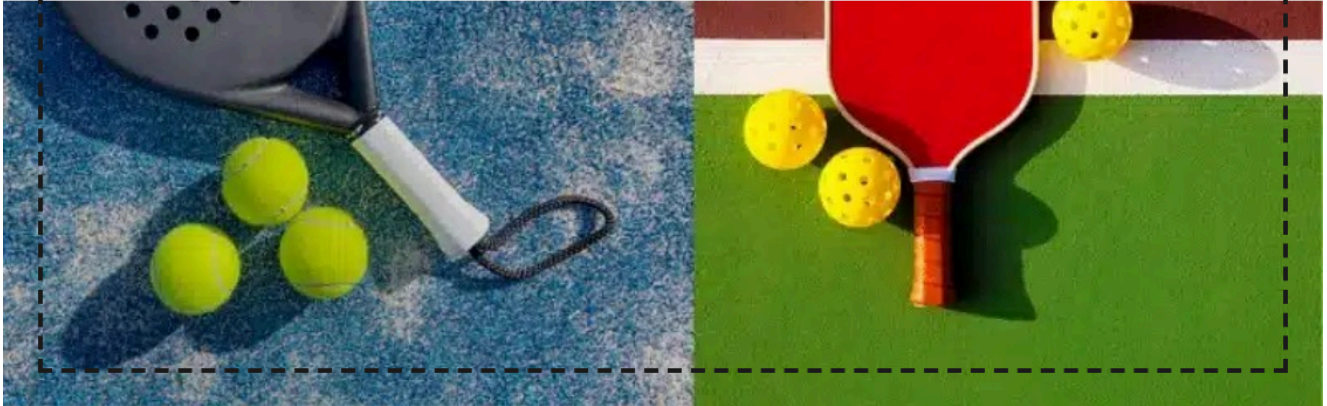


View this email in your browser

## PickleballPadel Newsletter

Your Community for Combining Pickleball and Padel



# Hello!

Welcome to the first edition of The Pickleball**Padel** Newsletter. We're excited to show you why adding **Padel** is a smart move for your **Pickleball** facility.



# What is Padel?

Padel is played on a smaller court than tennis and is enclosed by walls, combining elements of tennis, pickleball and squash; players use solid, stringless rackets and a depressurized tennis ball. The game emphasizes doubles play, with walls in play for rebounds, creating strategic, fast-paced rallies.

Padel and pickleball are both highly social, easy to learn, and enjoyable for players of all skill levels.

## Unlock New Revenue with Padel

While pickleball is the fastest-growing sport in the U.S., with 40 million players, padel takes the global stage as the fastest-growing sport in the world, boasting 25 million players. Padel complements pickleball seamlessly because both sports share these qualities:

- Inclusive: Easy to learn, accessible, and enjoyed by all ages
- Revenue-Boosting: Unlocks a new and lucrative income stream
- Trend-Aligned: Capitalizes on the rising popularity of racket sports

Additionally, padel's strong appeal to Gen Z and Millennials brings a fresh and dynamic demographic to your facility.

## Real Results:

### Facilities Thriving with Padel



## The West Side Tennis Club Adds Padel

The West Side Tennis Club is America's most historic and iconic showcase for tennis. The club has been the site of some of the sport's most memorable moments. It hosted what is now known as the US Open Grand Slam tournament for over 60 years before it was moved to the National Tennis Center in Flushing, NY in 1978.

"The Instantcourts have been a game-changer, as the installation was not only seamless, but the response from the membership has been very positive. The ability to quickly set up a court without compromising on quality or space has made padel more accessible than ever. **This is exactly what we needed to enhance our member experience.**"

Layosh Toth,  
General Manager  
The Westside Tennis Club,  
Forest Hills, New York

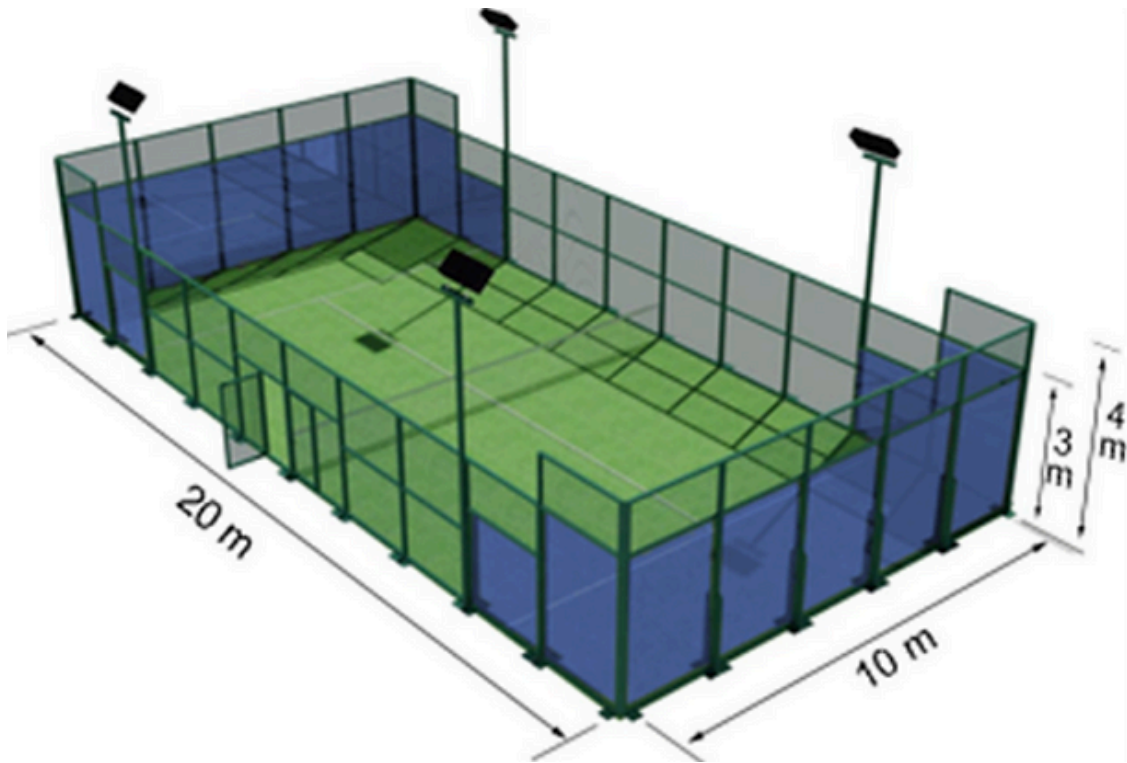


## Quick Tip of the Month: Court Dimensions and Setup for Padel

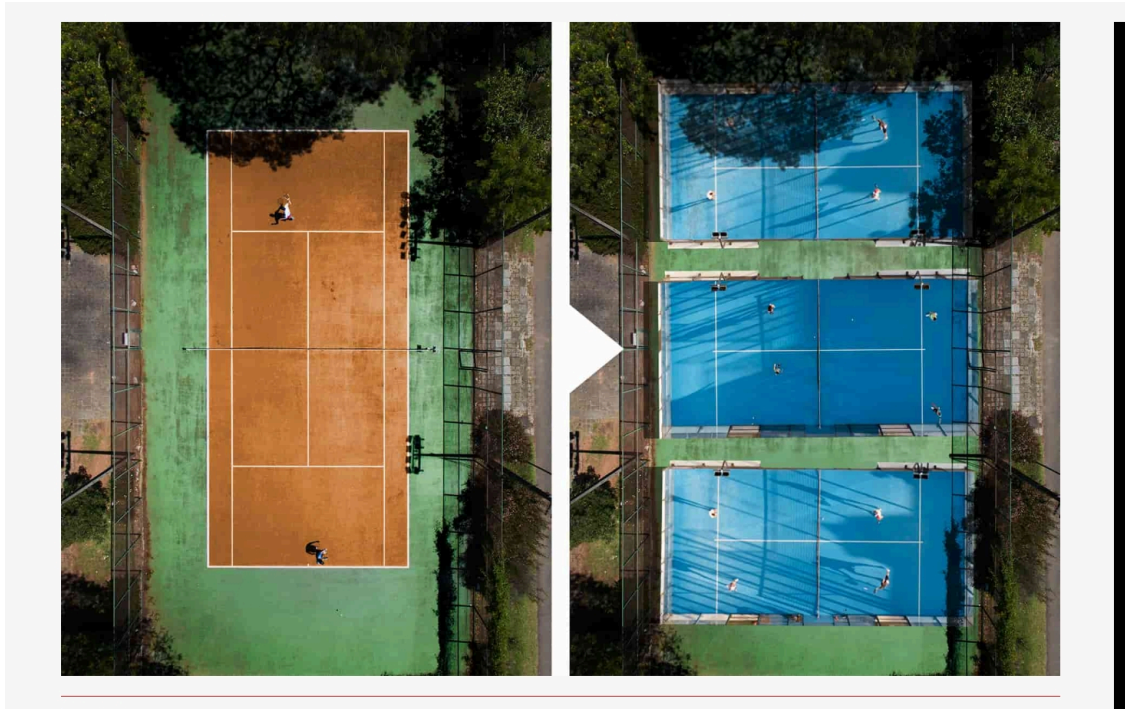
A single tennis court can be converted into a padel court with room to spare.

Padel fits nicely into a 45' X 75' space.





One Tennis Court = Three Padel Courts



1. **Let's Bring Padel to Your Courts**

[Schedule Your Free Consultation](#)



Subscribe Now For Expert Tips



*Copyright (C) 2024 \*|PickleballPadel|\*. All rights reserved.*

Our mailing address is:  
Deerfield, IL 60015 USA

Want to change how you receive these emails?  
You can update your preferences or unsubscribe

